

Newsletter of

The Friends of the Lansing Community Library

Issue 1 - Fall 2009

Adult Program Highlights: 2009

The Friends of Lansing Community Library (LCL) organized 13 public programs during 2009. Topics were wide-ranging, and included *Caring For Your Pet in a Medical Emergency*, *Gardening with Native Plants*, *Money Management* and *Fly Fishing For All*. We had programs for lots of different interests! Two of the most popular ones highlighted bits of history with a Lansing perspective.

In May, Bill Gracon, Senior Engineer at Cargill's Cayuga Mine, entertained nearly 85 people with a history of salt mining in Lansing, beginning with the founding of the Cayuga Rock Salt Company in 1921. In *Mining 101: What's Happening at Cargill Salt Mine*, Mr. Gracon also described current mining techniques, mine safety, mapping of mine reserves, and distribution of salt. Remarkably, today's miners can remove 10,000 tons of salt per day from the mine's current depth of 2,300 feet below Cayuga Lake.

In September, John Thompson, Joan Hass, and Lou Barr presented *Privy History and the Outhouses of Lansing*. The audience of 65 people was entertained with humorous stories of early privies and their construction, the introduction of toilet paper, Thomas Crapper's revolutionary invention, and how running water made the outhouse obsolete.

Pictures of Lansing outhouses, along with outhouse memorabilia, were on display throughout the library for several weeks after the program.

The Lansing community is rich with people and topics for future library programs and the Friends of LCL are planning a program on Lansing Farms for 2010. Ideas, historical perspectives, photos, and participation from Lansing farm owners and residents are welcomed for this or any other program. Do you have an idea for an interesting program? Leave us a note at the circulation desk, or send us an e-mail at: DLSg@cornell.edu.

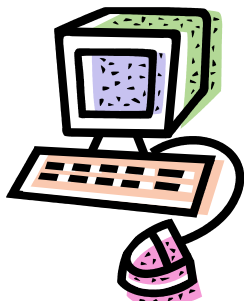


Interlibrary Loans

Have you taken advantage of interlibrary loan? Lansing patrons can now access the collections of all libraries in the five-county Finger Lakes Library System (FLLS). Requests can be made at LCL or online anywhere, including from your home. Books are delivered to LCL when they become available and can be returned here when finished. So far this year, 1222 requests have been filled.

Did You Know?

Books taken out from any FLLS library, including the Tompkins County Public Library, may be returned to LCL. No need for a special trip to Ithaca or outlying libraries.



New Items

LCL continually adds new books and other materials to its collection through donations and purchases. Recently acquired books, with a yellow "NEW" label on the binding, are on display in the bookcase located between the computer desks in the center aisle of the stacks. Look for best sellers and other new publications of fiction and non-fiction for all age groups. Don't forget to check out other new items in the DVD, audiobook, and picture book areas, too.

Computers and Wireless Access

LCL has two public computers, as well as wireless service available to patrons, with plans to add a third computer soon. To use one of LCL's computers, register at the lobby computer across from the circulation desk. Enter your patron number located on your library card, and a computer will be assigned to you. Sessions are 30-minutes when other patrons are waiting. You can also bring your own laptop and other devices to take advantage of LCL's wireless service.

Summer Reading Program

Each summer, following a gala kickoff entertainment event, Lansing children enthusiastically sign up for the Summer Reading Program at Lansing Community Library (LCL). As part of this popular program, kids keep a record of the books they read, have fun reading, and then earn prizes for their efforts. The more books they read, the more prizes they win. This program helps maintain children's academic gains over the school summer break and makes it more likely they will become lifelong readers.

The Friends of LCL hold semi-annual book sales with the proceeds paying for Summer Reading Program costs, which include the kickoff entertainment and prizes for completing each reading level.

Summer 2009's program theme for young readers was *Be Creative at the Library* and the theme for teens was *Express Yourself at the Library*. 175 Lansing children signed up and read a total of 1,210 books!! Summer 2010's program theme is *Make a Splash, Read!* for young readers, and *Make Waves at your Library* for teens. Look for the announcement of the 2010 Summer Reading Program in the Spring.

Landscaping at LCL

Even if you do not have a green thumb, you may be interested to know that the Landscape Advisory Group (LAG) of the Friends of LCL is working on a landscaping plan for grounds outside the library. Together with Dan Segal and Mike Fitzpatrick of locally-owned nursery, The Plantsmen, LAG is starting with the area on the west side of the library. The process of landscaping may take a while since we rely on volunteer labor and donations for plants, but we hope to begin the project in 2010. We have a design plan donated by Dan and Mike, and it will be available for viewing at the library after the beginning of the year.

If you are interested in helping through donation of labor (for planting, weeding, etc.) or funds to help us purchase nursery stock and other materials, please contact the Friends' Landscape Advisory Group at suzhinderliter@yahoo.com.



Book Club for Adults

Join us at LCL for our monthly Adult Book Club. Meet with other book lovers to read and discuss a wide variety of interesting titles. Start the new year right - join us at our next meeting on January 26 at 7:00 PM. We will discuss *Grapes of Wrath* by John Steinbeck and other classics of your choice. We look forward to seeing you!

Do You Know About the Side Entrance?

You can enter the library using the at-grade side walk entrance on the west side of the building (facing Lansing Community Building). To get to the main floor once inside, use the interior stairway or the lift at the end of the entry hall. Instructions to operate the lift are located to the right of its door and inside. We are grateful to the John Ben Snow Memorial Trust which funded the lift.

Features in next newsletter: automated library system, generous donors, and upcoming programs.

The Friends of LCL invite supporters to make monetary donations to fund special projects.

Please make checks payable to: **Friends of Lansing Community Library.**

**Mail to:
Friends of LCL
PO Box 289
Lansing, NY 14882**

**Friends of Lansing Community Library
PO Box 289
Lansing, NY 14882**

Postal Patron